

MGM



TRANSFORMER COMPANY



U.S. DEPARTMENT OF
ENERGY
DOE 2016 COMPLIANT



Medium Voltage Dry Type General Purpose Distribution Transformers



Energy Verified

Other
Products



Dry
Substation
(Bulletin 30)

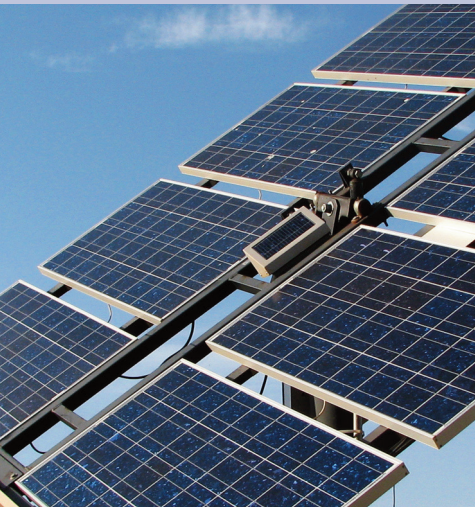


Liquid
Substation
(Bulletin 40)



Custom 600V
Dry Type
(Bulletin 15)

BULLETIN 15



Let MGM Transformer Company with 40 years of manufacturing experience design and deliver your next custom transformer! To meet the requirements of your special applications, we can develop units with any voltage combination, tap arrangements, winding options and enclosure types. Some examples of special projects are:

- ◆ Low noise level transformers for use in hospitals, schools and office buildings
- ◆ Marine duty application for use near shores, on docks and onboard ships and marine platforms
- ◆ Totally Enclosed Non-Ventilated (TENV) for use in adverse atmospheric environments
- ◆ Auto-transformers for machinery voltage conversions
- ◆ OSHPD seismic certified transformers to meet regulatory standards such as hospital installations



With our two state of the art manufacturing facilities we can offer quick turnaround time with free shipping throughout the continental United States. Ask about our Bull Rush program for expediting your order.

MGM Transformer Company can manufacture your units at our 120,000 square foot plant in the U.S. and source the raw materials solely from American companies if required. By doing so we can certify your units to be compliant with all of the various "Buy U.S." statutes (either state or federal). Please make sure to specify your requirements at the time of order.



SOUND LEVELS

MGM general purpose dry type transformers are designed to meet NEMA ST-20 sound levels.

NEMA Standard Sound Levels

KVA	dB Level
0-9	40
10-50	45
51-150	50
151-300	55
301-500	60

THREE-PHASE DRY TYPE TRANSFORMERS

CLASS A	(20KV BIL, 30 KV BIL – 2.5 KV, 5KV)
CLASS B	(60 kV BIL, 95 kV BIL - 5 KV , 8.7 KV) AND (60 kV BIL, 95 kV BIL, 110 kV BIL - 15 KV)

		Enclosure Type	
KVA	C - RISE	CLASS A	CLASS B
30	150	GPB+	N/A
	115	GPB+	N/A
	80	GPB+	N/A
45/50	150	GPC	N/A
	115	GPC	N/A
	80	GPC	N/A
75	150	GPC+	GPE
	115	GPC+	GPE
	80	GPC+	GPE
112.5	150	GPC+	GPE
	115	GPC+	GPE
	80	GPD	GPE
150	150	GPD	GPE
	115	GPD	GPE
	80	GPD	GPE
225	150	GPD	GPF
	115	GPE	GPF
	80	GPE	GPF
300	150	GPE	GPF
	115	GPE	GPF
	80	GPE	GPF
400	150	GPE	GPF
	115	GPE	GPF
	80	GPE	N/A
500	150	GPE	N/A
	115	GPF	N/A
	80	GPF	N/A

NOTES:

- See back page for enclosure dimensions
- Higher kV BIL, K-Factor or other special designs may change enclosure size
- A general purpose (GP) unit that has bus to ends will require a substation enclosure: consult MGM for details

AVAILABLE OPTIONS & FEATURES

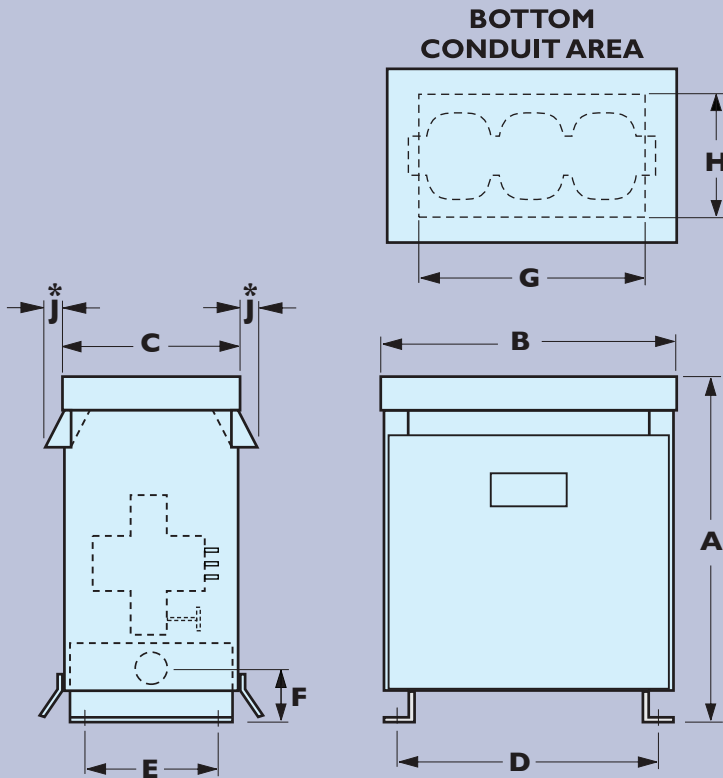
- DOE 2016 Efficiency Compliant
- Aluminum or Copper Windings
- Outdoor NEMA-3R Kit
- 150, 80 or 115 C Temperature Rise
- K-Factor: up to K-30
- Wall Mount Brackets (15 – 75 KVA)
- 60, 50 Hz; 50/60 Hz
- Totally Enclosed Non Ventilated
- Any Voltage Arrangement
- Stainless Steel Case
- Reduced Sound Level
- UL 1561 Listed
- Electrostatic Shield
- Min. 60 dB Common Mode Noise Attenuation
- ANSI C57.12.01
- Seismic Zone IV Compliant
- Taps (standard or special)
- Impedance (standard or special)
- Seismic certification (OSHPD) optional
- Bottom or top termination





MGM TRANSFORMER COMPANY
 5701 SMITHWAY STREET
 CITY OF COMMERCE, CA 90040
 Phone: (800)423-4366, (323)726-0888
 Fax: (323)726-8224
 Website: www.mgmtransformer.com
 e-mail: sales@mgmtransformer.com

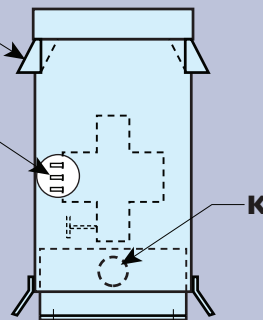
Submit your quote request at:
quotes@mgmtransformer.com



Weather-shields
(optional)

Primary taps

AVAILABLE ACCESSORIES	
Bottom Mount Wall Bracket	
Side Mount Wall Bracket	
OSHPD Seismic Kits	
Rain Hoods/Weather Shield Kits	
Rodent/Bird Screen	



Enclosure	DIMENSIONS (Inches)										Wall Bracket	Weather Shield
	A	B	C	D	E	F	G	H	J	K		
GPA	28	21	14	18½	11½	-	17	10	-	-	WB1/NWB	†
GPB	32	26½	17	23	14	-	22	13	-	-	WB1/NWB	†
GPB+	38½	28½	20	28½	17½	-	26	16½	-	-	WB2/NWB	†
GPC	40½	31½	21¾	28½	19	-	26	16½	-	-	-	†
GPC+	40½	36½	21¾	33½	19	-	31	16½	-	-	-	†
GPD	51½	40½	26½	37	21	10½	35	19	4⅝	5"	-	RH5*
GPE	66	50½	32	47½	24	11¾	44	24	4⅝	2-5"	-	RH6*

*GPD and GPE enclosures require weather shield kits for outdoor (NEMA 3R) installations.

† Dual rated enclosures suitable for indoor or outdoor installations. (NEMA I, NEMA 3R)

Consult factory for GPF enclosure dimensions and drawing.
 Drawings are for reference only and not intended for construction purposes.

Bulletin 20, 4/2019 Printed in the U.S.A.